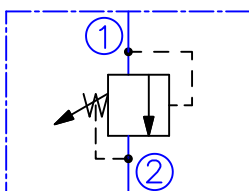


**DESCRIPTION**

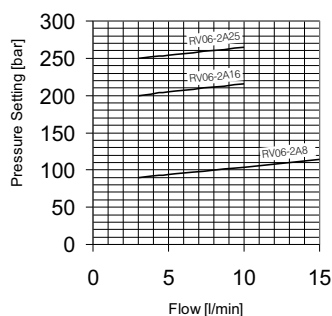
A screw-in , cartridge-style , direct-acting , poppet-type , hydraulic relief valve intended for lower flow circuits requiring low internal leakage.

**OPERATION**

The RV06-2A blocks flow from 1 to 2 until sufficient pressure is present at 1 to force the spring-opposed poppet from its seat.

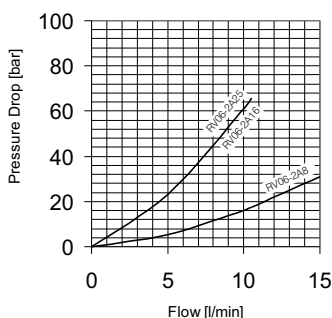
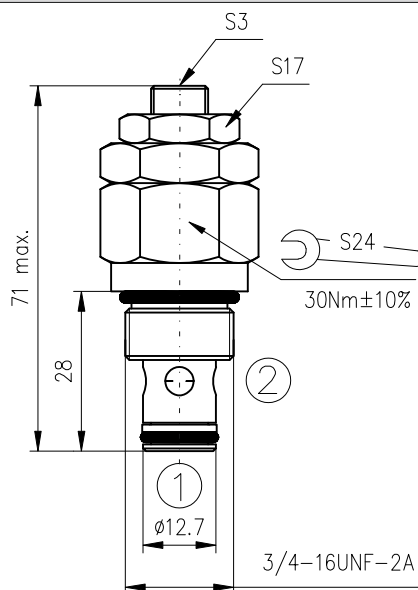
**SYMBOL**

**PERFORMANCE**

Cartridge only  
32cSt oil at 40°C



The Performance Chart illustrates flow handling capacity at max. setting for each spring range option. Pressure rise will vary with spring (range) and with setting within range due to flow forces.

32cSt oil at 40°C


**DIMENSIONS**

**ORDERING CODE**

RV06-2A ... ..

Relief valve

Pressure adjustment range:

0...90bar - **8**  
20...200bar - **16**  
30...250bar - **25**

Seals:

Buna N - **N**  
Viton V - **V**

**TECHNICAL DATA**

Operating pressure	250bar	
Pressure adjustment range:	RV06-2A8...	0...90 bar
	RV06-2A16...	20...200 bar
	RV06-2A25...	30...250 bar
Rated flow - See Performance Chart		
Internal leakage:	0,25cc/min at 200bar	
Working liquid-hydraulic oils with characteristics:		
-viscosity	10...400 cSt	
-degree of filtration	0,025 mm	
-temperature	-20...+80°C	
Cavity: See "Cavities and bodies" brochure	CC06-2	